

We Make Solar Evolve

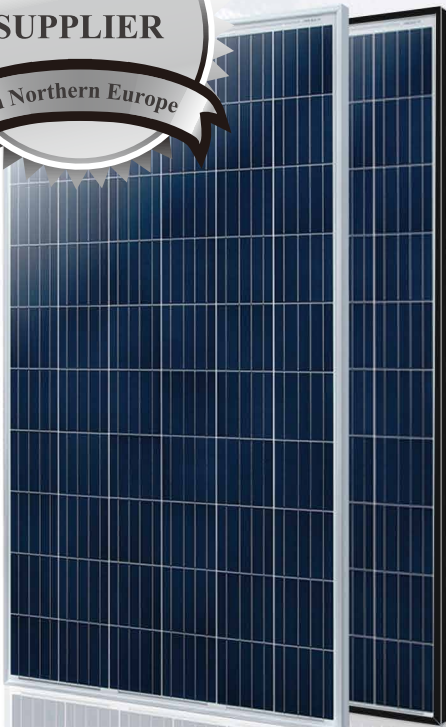
EiTe POLY

Polycrystalline Module

ET-P660265WW/WB 265W

ET-P660260WW/WB 260W

ET-P660255WW/WB 255W



Rich Product Portfolio & Innovative Product Strategy, satisfy customer needs to the best, and keep the customers' overall costs to the lowest.



High Conversion Efficiency
Industry-leading processing techniques realize great module efficiency, steady power output guaranteed.



Anti-reflective Coating and Reduce O&M Costs
Easier to clean by rainwater to remove dirt on the glass surface, making higher power output and lower maintenance costs.



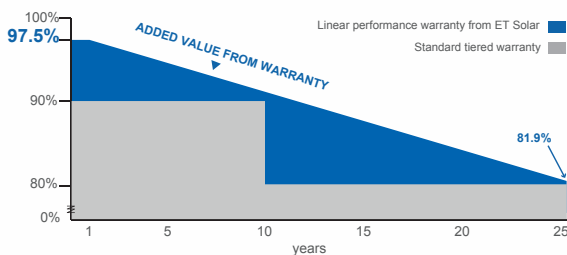
0 to +5W Positive Tolerance
Gain more power yields than expected.



Excellent Loading Capability
2400Pa wind loads, 5400Pa snow loads.
Durable and long-lasting.



Top-quality & Trustworthy Product
Rigorous Quality Management System built.
Multiple internationally recognized PV industry standard certifications attained.



- 25** 25-year performance warranty
- 10** 10-year warranty on materials and workmanship

IEC 61215 Ed.2
IEC 61730
IEC 61701
IEC 62716
UL 1703



CONFORMS TO UL STD. 1703
CERTIFIED TO UL/ISO/IEC STD.C 1703-01



Towards Excellence

www.etsolar.com

ELECTRICAL SPECIFICATIONS (STC)

Model Type	ET-P660265WW ET-P660265WB	ET-P660260WW ET-P660260WB	ET-P660255WW ET-P660255WB
Peak Power (Pmax)	265W	260W	255W
Module Efficiency	16.29%	15.98%	15.67%
Maximum Power Voltage (Vmp)	30.74V	30.59V	30.29V
Maximum Power Current (Imp)	8.62A	8.50A	8.42A
Open Circuit Voltage (Voc)	38.29V	38.16V	37.89V
Short Circuit Current (Isc)	9.24A	9.07A	9.00A
Power Tolerance	0 to +5W		
Operating Temperature	- 40 ~ + 85°C		
Maximum System Voltage	DC 1000V		
Nominal Operating Cell Temperature	45.3±2°C		
Fire Safety	Class C(IEC) / Type 1(UL)		
Maximum Series Fuse Rating	20A(IEC) / 15A(UL)		

ELECTRICAL SPECIFICATIONS (NOCT)

Model Type	ET-P660265WW ET-P660265WB	ET-P660260WW ET-P660260WB	ET-P660255WW ET-P660255WB
Peak Power (Pmax)	196.8W	191.8W	188.2W
Maximum Power Voltage (Vmp)	28.3V	28.3V	27.9V
Maximum Power Current (Imp)	6.96A	6.78A	6.75A
Open Circuit Voltage (Voc)	35.5V	35.3V	35.10V
Short Circuit Current (Isc)	7.45A	7.26A	7.26A

MECHANICAL SPECIFICATIONS

Cell Type	156mm x 156mm
Number of Cells	60 cells in series
Weight	18.5 kg (40.79 lbs)
Dimension	1640×992×35 mm (64.57×39.06×1.38 inch)
Max Load	5400 Pascals (112 lb/ft ²)
Junction Box	IP67 rated
Connector	MC4 Compatible
Output cable	4mm ² (IEC) / 12AWG:PV Wire(UL)

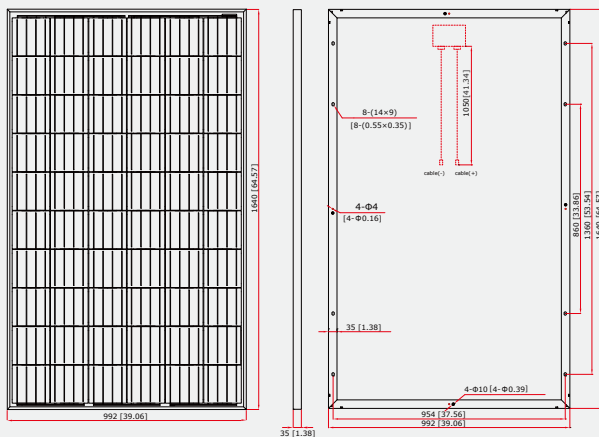
TEMPERATURE COEFFICIENT

Temp. Coeff. of Isc (TK Isc)	0.04% /°C
Temp. Coeff. of Voc (TK Voc)	-0.34% /°C
Temp. Coeff. of Pmax (TK Pmax)	-0.41% /°C

PACKING MANNER

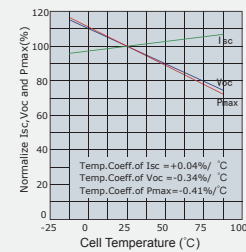
Container	40' HQ
Pieces per Pallet	30
Pieces per Container	840

PHYSICAL CHARACTERISTICS Unit:mm (inch)

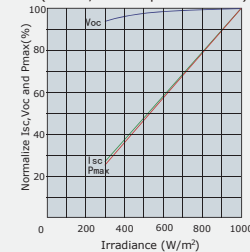


ELECTRICAL CHARACTERISTICS

Temperature Dependence of Isc, Voc and Pmax



Irradiance Dependence of Isc, Voc and Pmax (AM1.5, Cell Temperature 25°C)



Note: the specifications are obtained under the Standard Test Conditions (STCs): 1000 W/m² solar irradiance, 1.5 Air Mass, and cell temperature of 25°C. The NOCT is obtained under the Test Conditions: 800 W/m², 20°C ambient temperature, 1m/s wind speed, AM 1.5 spectrum.

Please contact support@etsolar.com for technical support. The actual transactions will be subject to the contracts. This parameters is for reference only and it is not a part of the contracts. The specifications are subject to change without prior notice.